

Sizewell C&D will affect our Environment, Leisure and Health

Environment

- Construction site 90% within the AONB, surrounded by nationally and internationally designated conservation areas.
- Deep quarries and massive spoil/materials heaps the height of Bury St Edmunds Cathedral.
- 10-12 Years of construction will;
 - Cut Suffolk Coast & Heaths AONB in two.
 - Bring light, noise and vibration disturbance.
 - Cause unacceptable habitat loss and fragmentation.
 - Change water levels in both Sizewell Marsh and Minsmere Levels.
 - Lose biodiversity in one of the most biodiverse areas of the UK.



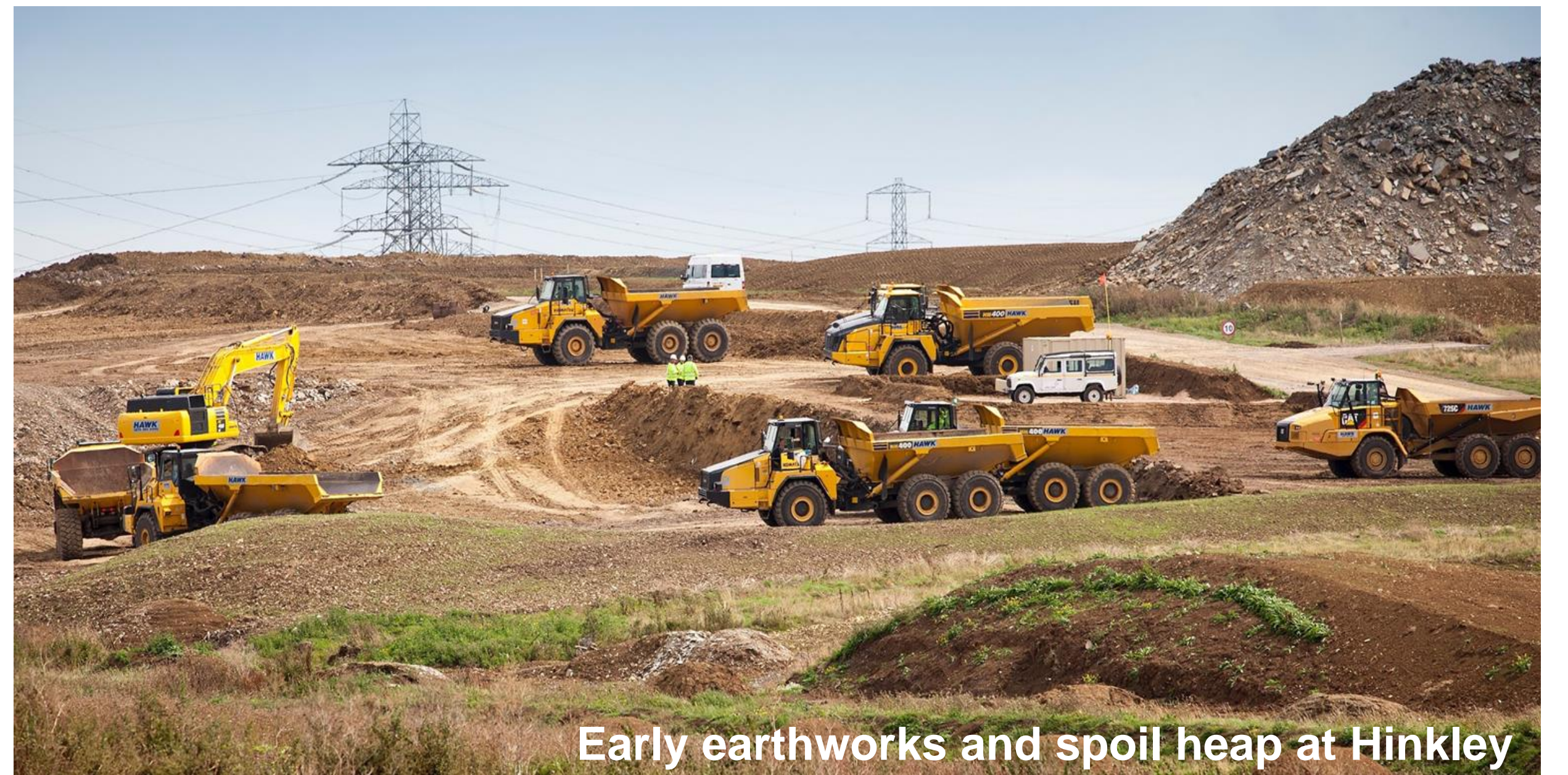
Nighttime at Hinkley Point



Abnormally large load on B1122 at Theberton

Health

- HGV, truck and bus traffic will bring unacceptable air pollution, noise, vibration, congestion and damage to listed buildings.
- Additional pressure on local health services from 2,400 workers in accommodation campus and workers renting locally.
- Potential disrupted or delayed access to emergency services from additional traffic.



Early earthworks and spoil heap at Hinkley



The renowned Eel's Foot Inn is only a few hundred metres from EDF's campus

Leisure

- Bridleway and Goose Hill closures, restricting walking and cycling routes.
- Temporary beach frontage closures, stopping Sizewell Beach ParkRun.
- High impact visual presence from shoreline, sluice path, Dunwich Heath and Minsmere.
- Loss of Dark Skies for up to 12 years.
- Peace and tranquility shattered.



Goose Hill from Sizewell C, planned to disappear below causeway



Sizewell Park Run location will be closed

EDF must address these problems for the community