

This is what two new nuclear power stations will mean for Minsmere and Eastbridge during 10 to 12 years of construction!



A campus for 2,400 workers with 3 and 4 storey buildings, **5 TIMES THE SIZE** of the above 3 storey development at Hinkley



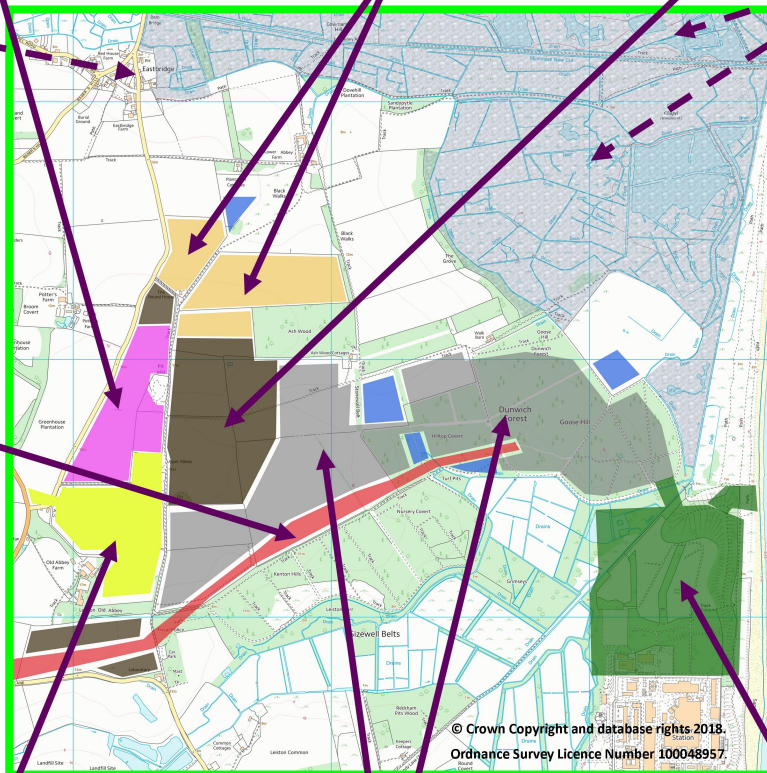
Up to 20 hectares of deep quarry excavations to extract sand/gravel then bury peat and other unusable materials just 260 metres from Eastbridge!



23 hectares of spoil and gravel heaps up to 30 metres high, the same height as the tower at Cathedral at Bury St Edmunds



Eel's Foot Inn



RSPB Minsmere



Minsmere Sluice

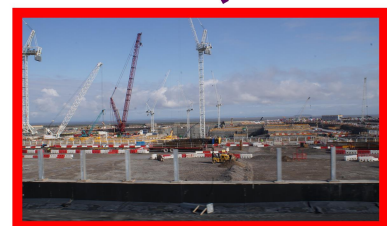
Rail access



20 hectare HGV reception and security area with parking space for 1000 cars and buses



92 hectares of forest and agricultural land used to create the construction compound and laydown areas



50 hectare platform 10 to 14 metres high. 5.5 hectares of SSSI swamp and 10 hectares of fen meadow destroyed permanently with up to 34 tower cranes lighting the site

Donations to assist Minsmere Levels Stakeholders Group's (MLSG) work are welcome at the QR code or at <http://minsmerelevelsstakeholdersgroup.onesuffolk.net/donate/>

